

Guiding Strategies

Guiding strategies will help inform decision making about the ongoing management and improvement of this area for a sustainable future. These strategies have been informed by community feedback, as well as input from other key stakeholders and independent experts.



Manage park use

By improving safety, managing dog access, better pathways, and protecting ecological, and cultural heritage.



Enrich the place experience

Through storytelling, interpretation elements, improved design, and recreational activities.



Prioritise places for people

By reconfiguring car parks, reclaiming parkland, improving accessibility, and integrating sustainable transportation options.



Imbed resilience and adaptation

Through adaptable design, raised park levels, tree canopy coverage, and water-sensitive urban design.



Advance healing and caring for Country

By collaborating with Traditional Custodians to protect cultural heritage and advance healing country.



Manage park use

This place is visited and shared by many who use it in different ways. The challenge is managing different uses so the community can enjoy their visit while being safe, avoiding an impact on our important natural environment and rich cultural heritage.

This strategy seeks to balance the recreation needs of the community with the long-term need to manage and enhance cultural heritage and the ecology, for the mutual long-term benefit of place and people.

How we could achieve this:

- Amend dog access throughout the reserve to protect the ecology, cultural heritage, reduce park user conflicts and improve amenity (eliminating unattended dog waste).
- Extend the dog off-leash area on Buddina Beach to ensure continued offering of pet friendly areas.
- Provide a new 3 metre wide Coastal Pathway in La Balsa Park to accommodate shared pedestrian and cycle use.
- Link the new section of the Coastal Pathway with the coastal pathway network at Gulai Street for clearer navigation through Buddina.
- Encourage reduced cycle, scooter, and skateboard speeds throughout the parkland to minimise pedestrian and cycle conflicts; and impose some 'path only' use to protect the ecology and cultural heritage.
- Improve safety and accessibility by clearly delineating spaces for pedestrians and spaces for vehicles, introducing additional pedestrian crossing points, and reducing traffic speeds.
- Manage light spill from the Pacific Boulevard residential towers and car park to protect turtle nesting areas.
- Define areas for special uses and events.





Enrich the place experience

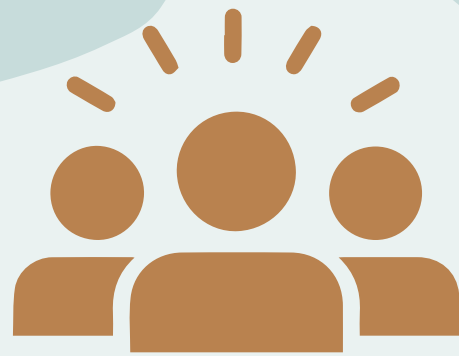
While the parkland is a much loved and well used destination, the exceptional history and ecological qualities of this place are not well known or appreciated. Providing opportunities to gain a better understanding of these qualities will help to foster community pride, delight, and deepen respect for this special place.

The history and qualities of the area can be reflected through the design of infrastructure. This will help to strengthen its distinctive character and identity, ensuring its look and feel is unique.



How we could achieve this:

- Reveal and share the place story at arrival points, gateways, lookouts, and special places.
- Provide a cultural and ecological education area in the heart of the reserve to educate the community, elevating the cultural and environmental significance of the reserve.
- Strengthen the place character through design of infrastructure and selection of materials and planting.
- Establish a clear and accessible pedestrian pathway network.
- Enhance playgrounds with interpretive elements, educating children about the reserve and its surroundings while increasing play value
- Improve existing lookouts and create more opportunities to highlight and enjoy views.
- Improve connection to the Mooloolah River with accessible river viewing platforms at La Balsa Park.
- Elevate the environmental and cultural significance by implementing a statement/interpretation/experience at the reserve entrances, enhancing awareness and respect.
- Enhance community awareness and appreciation of this unique place by incorporating interpretation and education to deepen understanding and enrich experiences throughout the reserve and park.



Prioritise places for people

People visiting the reserve and parkland get there by walking, cycling, or driving. The main method of transport is by car and these visitors park in one of five off-street car park areas. While these are well used, they could be better configured to utilise the open space along the foreshore, while maintaining convenient access.

How we could achieve this:

- Reconfigure the car park at the end of Pacific Boulevard to improve pedestrian accessibility and safety. Screen vehicle headlight impacts on the turtle nesting beach.
- Reconfigure the Gulai off-street car park to make better use of the space, improving pedestrian accessibility and safety.
- Reclaim valuable parkland by reconfiguring the two southern off-street car parks in La Balsa Park to on-street angle parking arrangement increasing high value parkland area for all to enjoy.
- Reconfigure Harbour Parade off-street boat trailer and car park to improve efficiency, improve function, reduce conflict and improve pedestrian safety.
- Make the most of the relationship between the parkland and the water by integrating an accessible terraced revetment wall and ramp at Half Moon Bay to increase accessibility and activation.
- Provide opportunities for sustainable recreation activities within the reserve, park and surrounding area e.g. hang gliding launch lawn, nudiebranch diving.
- Improve comfort and access with accessible paths, park infrastructure furniture and motorised and non-motorised vehicle parking.
- Improve east-west pedestrian links from Buddina Beach to the Mooloolah River.
- Incorporate opportunities to support active and public transport use where possible including a potential barge between La Balsa Park and Mooloolaba spit.
- Provide open 'kick and throw' lawn areas for recreation and exercise.





Imbed resilience and adaptation

Responding to climate changes is an important consideration when planning for the future of this place, so the community can continue to enjoy open spaces and waterways sustainably into the future.



How we could achieve this:

- Design a new seawall that can be adapted to accommodate sea level rise, as well as raise park levels to minimise impacts to valuable open space.
- Maintain and enhance the Buddina Beach dunes and dunal vegetation to reduce coastal erosion and the impacts of climate change.
- Increase shade and tree canopy coverage to reduce heat island effect to create comfortable places for recreation, walking and cycling.
- Integrate water sensitive designs through the parkland that improve water quality.
- Select endemic vegetation species and robust materials that are suited to the local climate.



Advance healing and caring for Country

The reserve and parkland hold profound cultural heritage importance and features high value fauna and flora. Although this area has experienced substantial alterations dating from the 1960s, much of the cultural and ecological value is intact.

Cultural heritage and remnant vegetation are currently at risk of being damaged and/or lost because of human impacts. They need to be managed and protected for future generations to enjoy.

How we could achieve this:

- Work with the Traditional Custodians of this land to improve land management, foster cultural awareness and respect the significance of this place.
- Provide interpretation elements such as signage and art, as well as activities like a yarning circle, sound trails, cultural tours, and volunteer programs.
- Raise awareness and deepen appreciation of this place by providing learning and education opportunities throughout the reserve and park.
- Further engage with Kabi Kabi elders to learn more about this place.
- Reconnect fragmented vegetation patches by revegetation, providing increased continuous habitat for vulnerable flora and fauna within the reserve.
- Close off goat tracks within the reserve removing human presence allowing ecological regeneration.
- Establish environmental protection areas prohibited to pets to minimise impacts to endangered migratory shorebirds and other vulnerable flora and fauna.
- Establish designated dog on-leash areas to minimise impacts on other vulnerable flora and fauna in the reserve.
- Create a long-term management and maintenance framework for the parkland. Bring together relevant Council areas with community volunteer groups to support Indigenous Land Management activities.

