

ENGAGEMENT | SNAPSHOT

INTRODUCTION

Maleny's much-loved Maple Street has been selected to continue minor placemaking streetscape improvements in 2023.

Council has been working with the Maleny community to re-set the Maleny Placemaking project since the 2005 inception with the delivered streetscape works to date.

Community engagement: Review and Refresh

Council asked for community's feedback to understand the key areas of Maple Street which need minor improvement and if the previous Maleny Streetscape Concept Plan 2005 needed any updating to meet the values and vision of the community.

Following the 'Review and Refresh' consultation held from 18 July to 15 August 2022, Council has identified key priorities for the Placemaking project in coordination with community sentiment and feedback provided on the Maleny Streetscape Diagram (2022).

More than 200 residents, business owners and visitors provided feedback with 198 surveys completed, three pop-up sessions, a community forum as well as speaking with 85 community members.

The community identified the following aspects of streetscape in order of highest priority being;

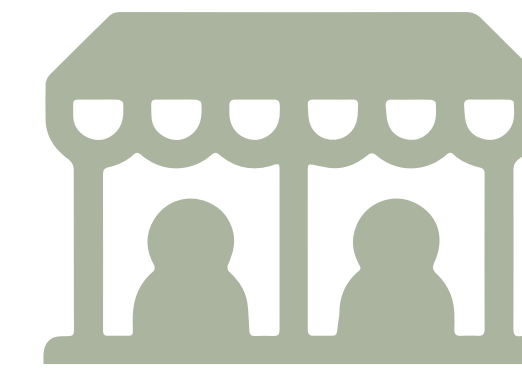
- Seating / places to meet
- Footpaths / Accessibility
- Parking / Traffic
- Trees
- Local Businesses
- Maleny Lane

COMMUNITY PARTICIPATION

MODES AND PARTICIPATION IN ENGAGEMENT



COMMUNITY FORUM
50+ PARTICIPANTS



POP-UP STALLS
30+ WRITTEN RESPONSES



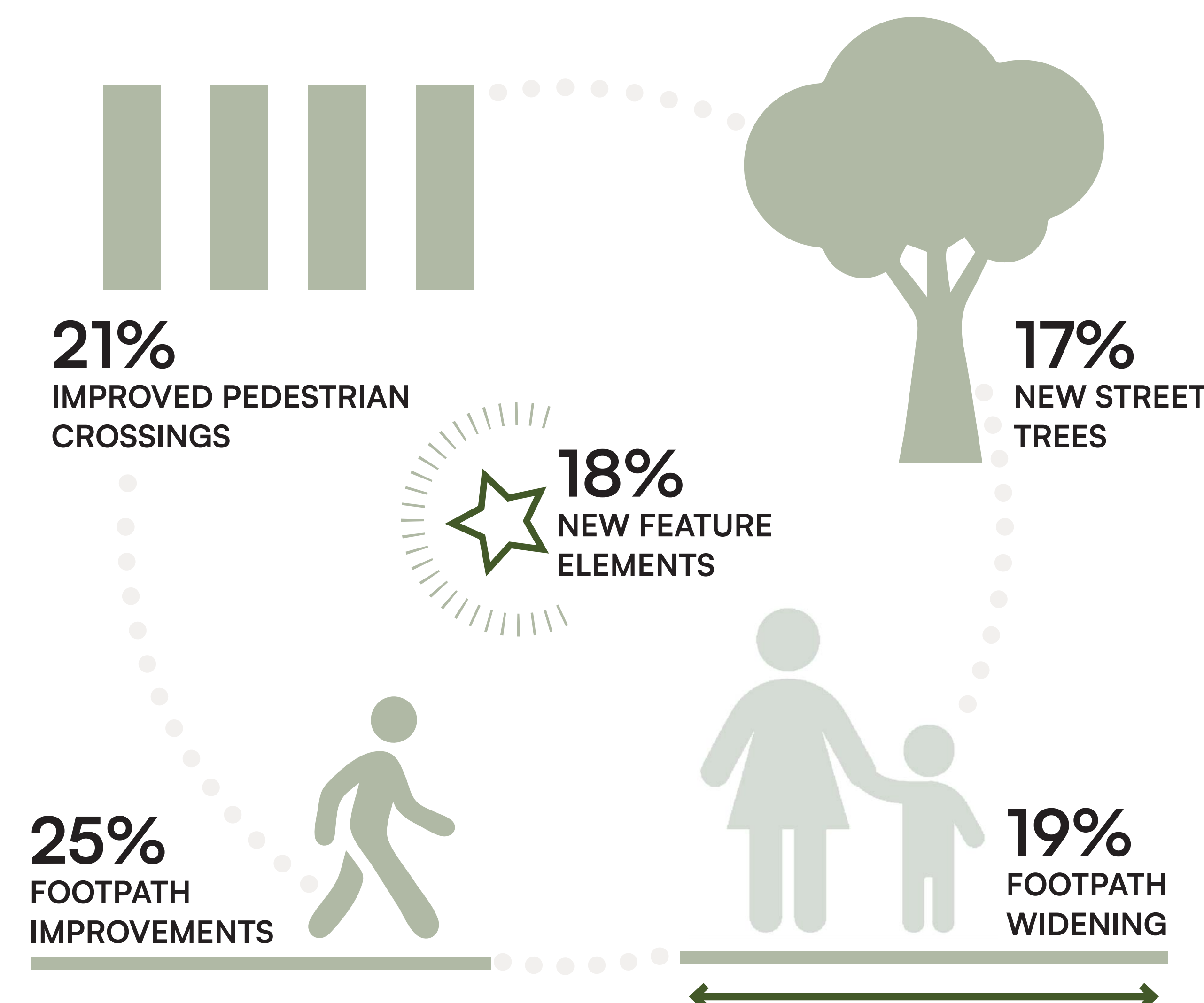
HAVE YOUR SAY
SURVEY



RESPONSES
198 ONLINE / EMAIL / LETTER

WHAT WE HEARD

STATISTICS OF COMMUNITY PRIORITIES



PROJECT TIMELINE

2001-2010

Initial Community Engagement undertaken for Maleny Streetscape Concept Plan (2005)

EARLY 2022

Project planning completed for Maleny Streetscape Placemaking Project

JUL-AUG 2022

Commencement of community engagement on the Maleny Streetscape Diagram (2022) - Review and Refresh - Have we got it right?

EARLY 2023

Review and prioritisation of community's values and vision to refine concept

WE ARE HERE

Update to the community on refined concept design and scope aligned with the community vision for improvements to Maple Street

MID-LATE 2023

Detail design and documentation stage

JULY 2024

Construction commencement

MAPLE STREET | MALENY
PLACEMAKING & STREETScape

VALUES & VISION | GUIDING PRINCIPLES

ENGAGEMENT THEMES

FUNCTION



The envisaged streetscape must be functional. This means that it must be responsive to the needs of all its users.

In other words, it has to be designed, organised and furnished for optimum use by pedestrians, drivers, strollers, wheelchair users, street café patrons, shoppers and sightseers.

"A better streetscape with seating and plantings would far outweigh the loss of a few carparks."

"The area at the front of Watson's Servo (which has been decommissioned) needs something transformational."

A Vibrant Street Economy

Support local and independent village shops by extending streetscape upgrades to the whole of Maple Street, providing opportunities for activation at key locations

COMFORT



Creating a comfortable streetscape involves consideration of elements that enhance amenity, usability and the wellbeing of its users.

These elements will include rest stops, seating, ample shade, drinking fountains and enhanced accessibility to increase comfort.

"Strolling along under shady trees with plenty of room to negotiate wheelchairs, pushchairs etc."

"Slow traffic, street trees and even pavements. People need to be able to wander easily around the town."

Connections to local and Cultural Heritage

Celebrate the unique cultural and heritage aspects of Maple Street by retaining and enhancing the unique village feel of Maleny as a local destination

SAFETY



To foster a safer streetscape environment; improvements will include better defined crossing points, new lighting and improved accessibility where possible.

"Safer pedestrian crossings with improved pavements."

"The ability to meander in an atmosphere conducive to pedestrian access."

"The top of Maple Street closest to Myrtle Street needs serious attention - another crossing."

The above quotes have been derived from the community feedback received through the Review and Refresh engagement phase.

CONCEPT PLAN | OVERALL STREETScape

MAPLE STREET VISION



LEGEND



Priority area

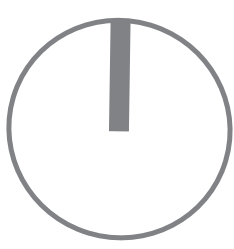


Streetscape tree planting



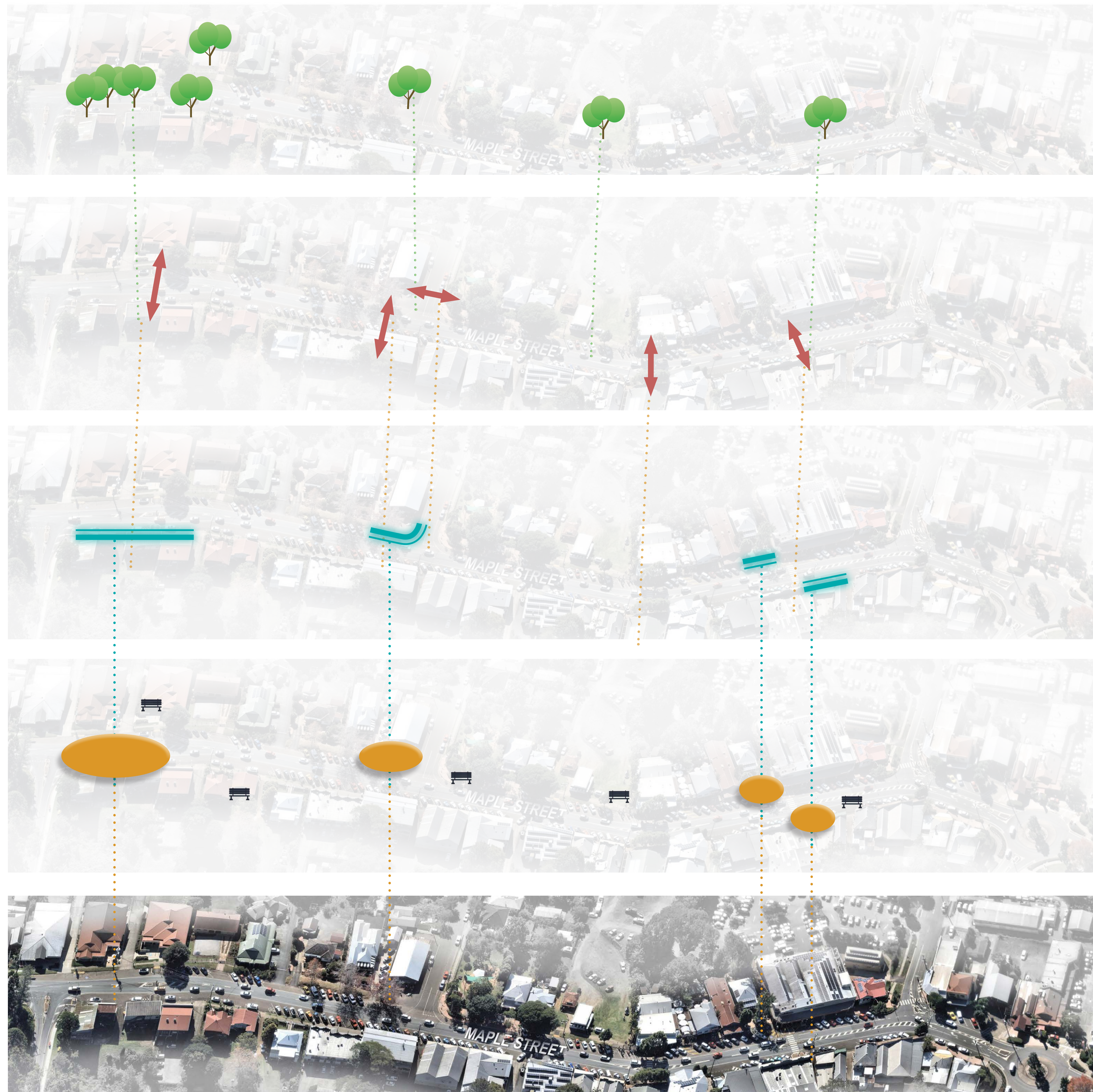
Streetscape bench seating

Date: 14.07.2023



OVERVIEW | STREETSCAPE LAYERS

KEY DESIGN ELEMENTS



A NATURALISED STREET

- Shade trees at 5-10m intervals
- Rain gardens forming part of the proposed stormwater management
- Attractive street gardens and planting palette throughout
- Additional shade trees to mitigate urban heat island effects

IMPROVED CROSSINGS

- Safer crossing points at key pedestrian desire lines
- Raised pedestrian crossings
- Refuge points

ACTIVATION THROUGH IMPROVEMENTS

- Retail spillover
- Outdoor dining
- Activation, installations, street performance
- Flexible people-focused spaces - attraction and delight

SOCIAL INFRASTRUCTURE

- Large and small gathering spaces
- Seating at key rest-stops
- Social settings
- Shaded and comfortable
- Footpath improvements to effectively deliver users to their destinations
- Additional seating preferably at 60m intervals as recommended by the 'Access All Ways DDA Report'

EXISTING STREETSCAPE CONDITIONS

- Heritage to reference and celebrate
- Scattered activation and inactive frontages
- A demand for a people focused street
- A discontinuous pavement condition
- Inconsistent tree canopy cover
- Vehicle dominated street

AREA 'A' | CONCEPT ZOOM IN

WESTERN MEETING PLACE



LEGEND

- 01 Existing kerb line
- 02 Proposed extension of kerb alignment
- 03 Proposed reconfiguration of parking
- 04 Proposed seat walling
- 05 Proposed outdoor cafe tables
- 06 Proposed concrete pavement
- 07 Proposed feature boulder seating/tables
- 08 Proposed bin units
- 09 Proposed wayfinding signage
- 10 Proposed area of mass, textured planting with floral highlights within slotted kerb/raingarden
- 11 Proposed shade canopy tree planting
- 12 Proposed driveway access
- 13 Proposed raised crossing
- 14 Proposed street lighting
- 15 Proposed accessible kerb ramp
- 16 Additional bench street seating
- 17 Proposed indicative outline of shade shelter

INDICATIVE SKETCH



INDICATIVE KEY ELEMENTS



Communal seating



A natural setting



Natural timber materials



Shaded comfortable spaces



Structural feature canopy



Natural stone materials

AREA 'B' | CONCEPT ZOOM IN

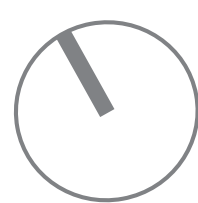
STREET PLAZA SPACE

PLAN



LEGEND

- 01 Proposed raised pedestrian crossing
- 02 Existing mature tree retained
- 03 Proposed seat wall terrace
- 04 Proposed sun lawn area
- 05 Proposed refuge island crossing
- 06 Proposed concrete pavement
- 07 Proposed raised pedestrian crossing
- 08 Proposed flexible activation space with power
- 09 Proposed area of mass, textured planting with floral highlights within slotted kerb/raingarden
- 10 Proposed shade canopy tree planting
- 11 Proposed street bench seating



INDICATIVE SKETCH



INDICATIVE KEY ELEMENTS



Open kerbs to raingardens



Seating in a natural setting



Natural timber materials



Existing tree as a central feature



Flexible activation space



Sun lawn area

AREA 'C' | CONCEPT ZOOM IN

MID-POINT IMPROVEMENT WORKS

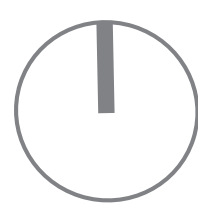
PLAN



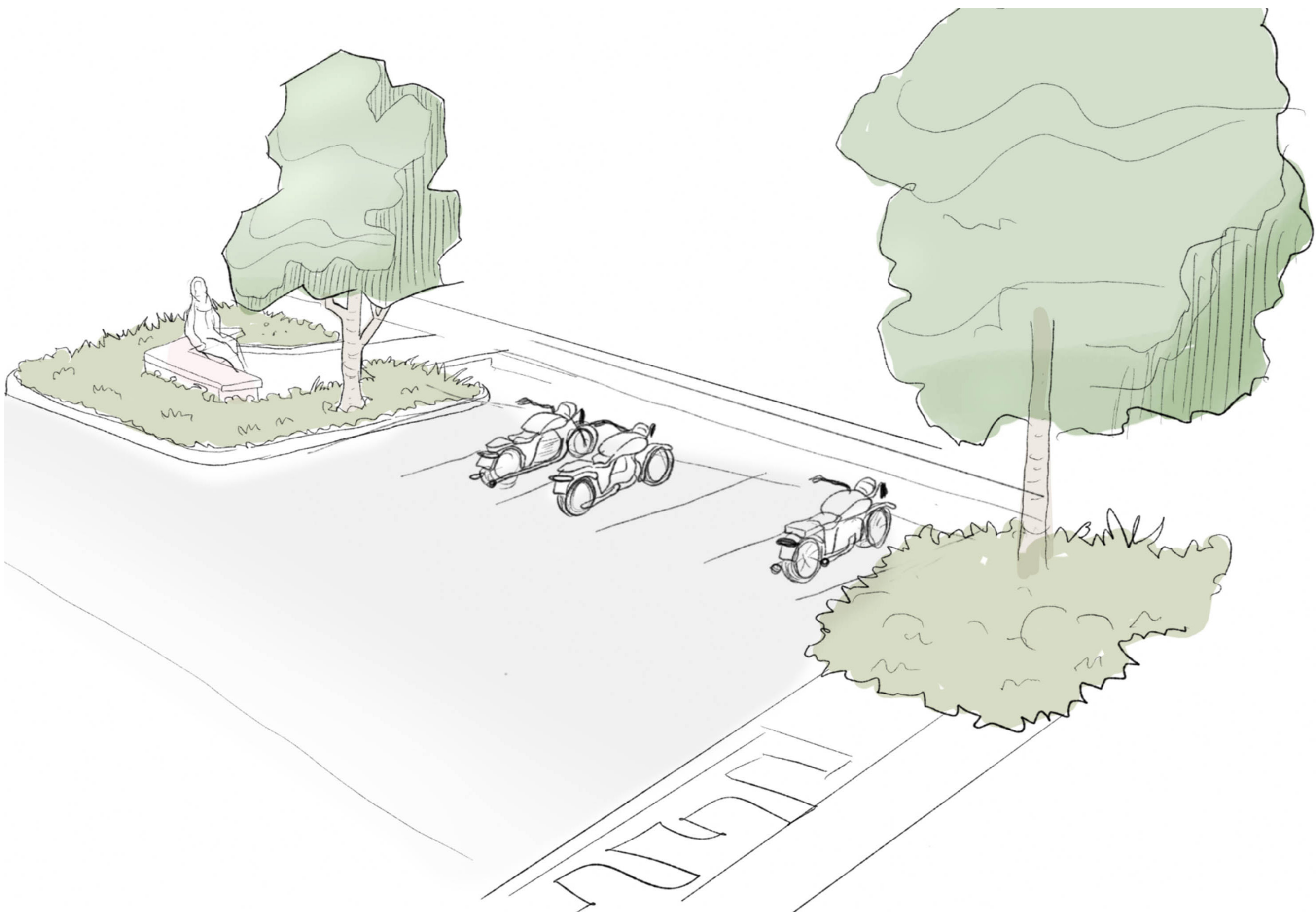
LEGEND

- 01 Proposed raised pedestrian crossing
- 02 Existing mature tree retained
- 03 Proposed seat wall
- 04 Proposed raingarden
- 05 Proposed shade canopy tree planting
- 06 Proposed reconfiguration of parking bays

0 1 2 3 4 5 10m



INDICATIVE SKETCH



INDICATIVE KEY ELEMENTS



Open kerbs to raingardens



Safer raised pedestrian crossings



Tree canopy planting

AREA 'D' | CONCEPT ZOOM IN

EASTERN END IMPROVEMENT WORKS

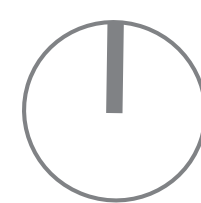
PLAN



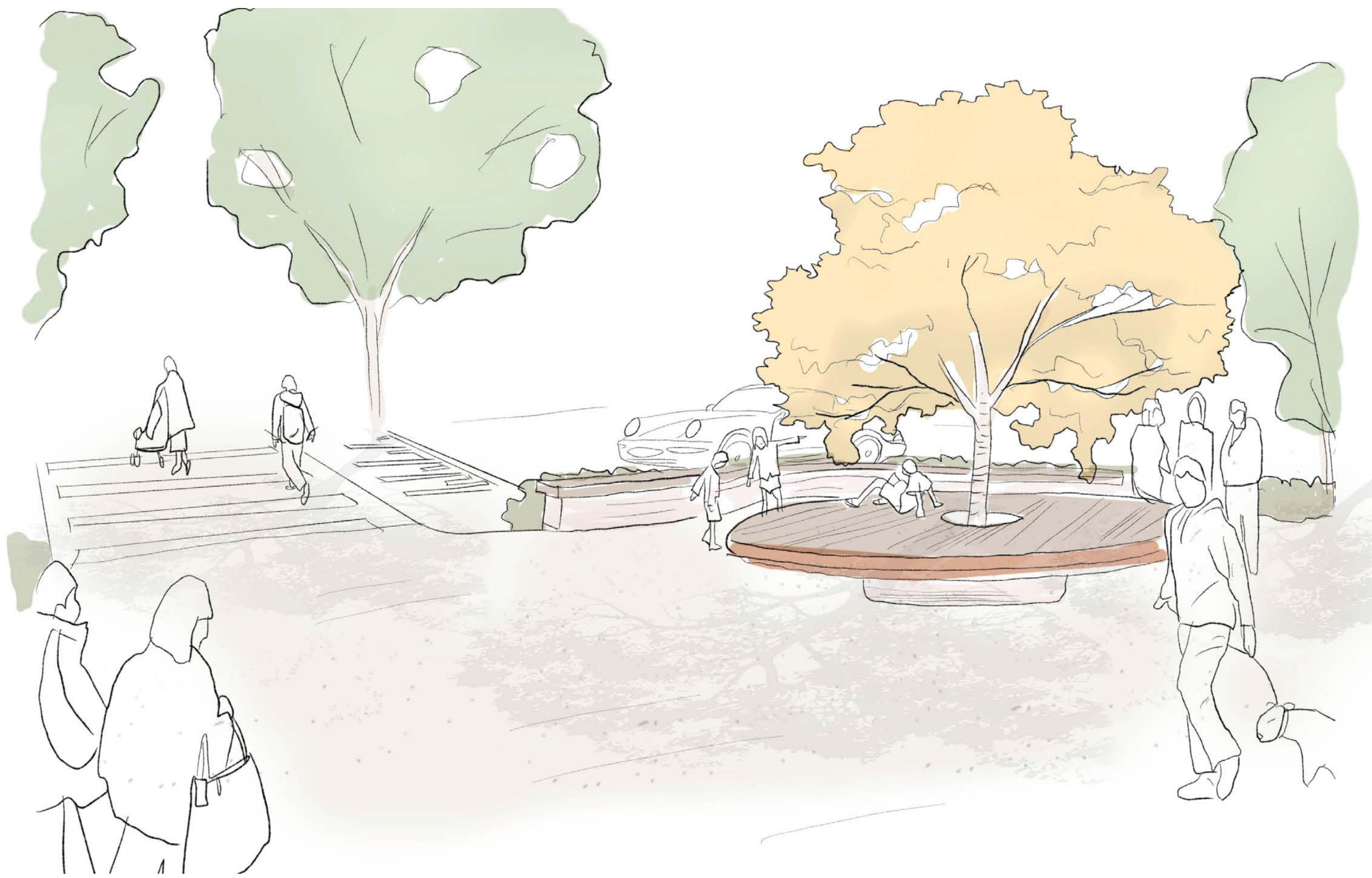
LEGEND

- 01 Proposed raised pedestrian crossing
- 02 Proposed social seating deck under natural canopy
- 03 Proposed seat wall
- 04 Retention of accessible parking bay with enhanced access to street footpath area
- 05 Proposed concrete pavement
- 06 Proposed area of mass, textured planting with floral highlights within slotted kerb/raingarden
- 07 Proposed shade canopy tree planting

0 1 2 3 4 5 10m



INDICATIVE SKETCH



INDICATIVE KEY ELEMENTS



Communal seating



Seating around trees



Open kerbs to raingardens



Enhanced accessibility



Safer raised pedestrian cross-



Tree canopy planting

MAPLE STREET | MALENY
PLACEMAKING & STREETScape