

Environment and Liveability Strategy Refresh Project

SUMMARY OF PROPOSED CHANGES

Phase 2 engagement: 21 July-13 August 2023

Table of Contents

Introduction	3
What is the Environment and Liveability Strategy Refresh Project?	5
When did the ELS Refresh Project commence?	5
What has been undertaken as part of the project?	5
What did the community tell us during phase one engagement?	6
Emerging issues	6
Priorities actions.....	6
Proposed updates for the ELS 2023 version.....	7
Part A: Strategic Directions	7
Part B: Implementation Plan	13
How can I get involved?	19
Next steps.....	19

Introduction

The [Environment and Liveability Strategy](#) (the Strategy) was adopted by Council in September 2017 to provide long-term strategic direction to guide growth and shape the Sunshine Coast for future generations to 2041.

It is one of Council's [three regional strategies](#) sitting alongside the Community Strategy 2019-2041 and Economic Development Strategy 2013-2033. The three regional strategies establish a long-term strategic and integrated platform that enables the region to approach the next 20 years in a positive and confident manner.

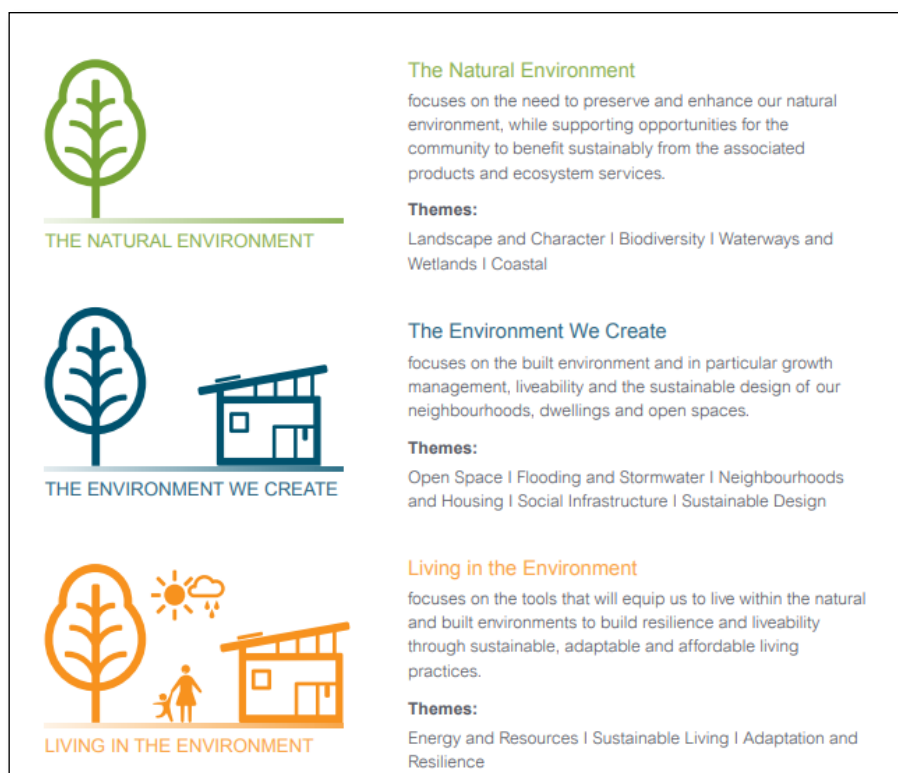
The Environment and Liveability Strategy (ELS) specifically provides long-term strategic direction to guide growth and deliver the transformational change required to maintain a healthy environment and liveable Sunshine Coast.

It provides a clear vision and forward plan, responding to [key drivers of change](#) for the region and has an integrated framework across [12 themes](#) and [Transformational Actions](#) to achieve multiple ecological, economic, and socio-cultural outcomes.

The ELS seeks to guide decision-making and actions that will continue to protect and respect the importance of the natural environment as the foundation for the Sunshine Coast way of life.

The Strategy is based on three interdependent sections:

1. The Natural Environment
2. The Environment we Create
3. Living in the Environment.



This award winning Strategy has supported the delivery of a number of integrated environment and liveability outcomes since adoption including:

- Becoming officially recognised internationally as a UNESCO Biosphere
- Expanding our green spaces including new environment reserves and recreation parks
- Blue Heart Sunshine Coast partnership

- Ongoing advocacy for the protection of our Regional Inter-urban Break
- New community facilities to ensure we have great places and spaces including the Baringa Community Centre
- Proactive planning for the expected impacts of climate change
- Delivering environment and sustainability activities and programs, many in partnership.
- New plans and strategies including the Stormwater Management Strategy, Recreation Parks Plan and Sunshine Coast Design Book.

More achievements can be found on Council's dedicated [Environment and Liveability Strategy website](#).

What is the Environment and Liveability Strategy Refresh Project?

The ELS is in its 6th year of implementation and a refresh has commenced to update both the [Strategic Directions \(Part A\)](#) and the [Implementation Plan \(Part B\)](#) to retain their relevance and contemporary approach.

The [ELS Part C: Network Plan](#) is planned to be updated in late 2024 to align with the New Planning Scheme Project timelines and preparation of an updated Local Government Infrastructure Plan.

When did the ELS Refresh Project commence?

The ELS Refresh project commenced in January 2023.

What has been undertaken as part of the project?

To inform the refresh project and proposed changes, the following activities were undertaken:

1. Background data review including a review of adopted council policy and priorities, demographics and census results etc.
2. Independent review of the Part A: Strategic Directions including consideration of relevant new international national and state strategies, plans and reports.
3. Review of existing Council community engagement results relevant to environment and liveability.
4. Council officer engagement
5. Community engagement including community group workshops and an online survey.

What did the community tell us during phase one engagement?

Phase one engagement in May 2023 focussed on:

1. Understanding what the emerging issues are for the Sunshine Coast; and
2. The priority actions required to deliver a healthy environment and liveable Sunshine Coast.

Council received close to 300 contributions during phase one engagement and highlights of engagement results included:

Emerging issues

- Protecting, managing and enhancing our natural assets including our coastal environments.
- Managing continued population growth and maintaining the positive aspects of the Sunshine Coast lifestyle.
- Responding to climate change.
- Addressing affordable housing including diversifying housing options and housing availability.
- Providing adequate public infrastructure to service current and future growth. In particular providing more transport infrastructure and public/active transport options.
- The development of the new Sunshine Coast Planning Scheme and how it responds to growth and development.

Many of the emerging issues raised are already reflected within the existing Strategy's Part A: Strategic Directions. The refresh is considering how these issues could be strengthened in the documentation.

Priorities actions

Respondents identified a number of priority actions to deliver a healthy environment and liveable Sunshine Coast.

Top priorities included:

- Protecting and restoring our natural assets and providing more green spaces.
- Greening our neighbourhoods – ensuring cool places and spaces, shady streets, green roofs, and a good balance of built form to green space.
- Protecting our coastal environments and coastal communities.
- Ensuring affordable housing and more housing options.
- Responding to climate change to improve the region's resilience.
- Improving public infrastructure to service current and future growth including providing better transport solutions.
- Connecting nature and people by providing more opportunities to experience the natural environment.
- Integrating good sustainability practices and delivering on sustainability initiatives.
- Delivering sustainable development.
- Community involvement.

The feedback we received has been valuable and a summary of what the community told us will be reflected in the refreshed version.

Proposed updates for the ELS 2023 version

Part A: Strategic Directions

Part A of the Strategy sets clear and integrated strategic directions. It contains background information, a vision, guiding principles and three interdependent sections which include a suite of themes to shape and support growth over the next 20-25 years.

The current structure and framework of the document is not proposed to change.



The project is looking to update the Strategic Directions and strengthen the following:

Update	Detail
Sunshine Coast UNESCO Biosphere Status	<p>In June 2022, our Sunshine Coast local government area was recognised by the United Nations Educational, Scientific and Cultural Organisation (UNESCO) as a biosphere reserve - where responsible development and people living sustainably sit alongside active conservation. Our region has joined a global effort of 738 biospheres in 134 countries to balance the environmental, social, cultural and economic needs of today, without compromising the ability to meet the needs of future generations.</p> <p>Our region's international recognition as a special place where people are living, working, learning and playing sustainably highlights the values of our region that we are seeking to protect and enhance, brings new opportunities and a range of possible benefits to our natural environment, community, lifestyle and economy.</p> <p>Proposed Change</p> <p><i>The refresh is proposing to reflect our Sunshine Coast Biosphere status to show our commitment to creating a positive legacy of future generations. Council's Corporate Plan 2023-27 provides an example where recognition of our Sunshine Coast Biosphere has already been made.</i></p>
UN Sustainable Development Goals	<p>As we advance our vision as Australia's most sustainable region – Healthy. Smart. Creative, the environmental, social, cultural and economic activities across the region must be carefully balanced to ensure we advance our</p>

	<p>vision sustainably. The United Nations Sustainable Development Goals (UNSDGs) for peace, prosperity, people and planet provide a comprehensive and internationally recognised framework for us to collectively align the way we each live, work, learn and play every day.</p> <p>Proposed Change</p> <p><i>Council is demonstrating leadership by committing to embed the UNSDGs into the ELS by aligning them to the relevant themes. Council's Corporate Plan 2023-27 provides an example of how the UNSDGs have been incorporated into Council documentation.</i></p>
Strategic integration	<p>The ELS is only one of our regional strategies that collectively provide the strategic directions for a sustainable Sunshine Coast. With each of the regional strategies being under a level of review, an opportunity exists to build greater strategic integration and incorporate consistent language/terminology in the documents to support communication and improve community understanding of their role and function.</p> <p>Since the adoption of the ELS a number of other council strategies and plans (e.g. Flooding and Stormwater Management Strategy) have been developed and are contributing to our environment and liveability.</p> <p>Proposed Change</p> <ul style="list-style-type: none"> <i>It is proposed that consistent drivers of change are incorporated into all of our regional strategies to better communicate what we are responding to, and the associated challenges and opportunities.</i> <i>Based on feedback received consideration is being given to how the contributions made by Council's Regional Economic Development Strategy, Community Strategy, Waste Strategy and Transport Strategy towards achieving the ELS vision - "a healthy environment and liveable Sunshine Coast" can be better communicated (diagrammatically versus text).</i> <i>It is proposed that wording changes will be made to ensure consistent language and alignment between the ELS and the other strategies and plans.</i>
State of climate emergency	<p>The ELS will continue to recognise climate change as a driver of change. Over time, we expect our region will be exposed to a number of climate hazards, including:</p> <ul style="list-style-type: none"> • rising sea levels • more extreme weather events • increasing temperatures <p>The associated impacts associated with these climate hazards will compound as more people, homes and built assets are exposed.</p> <p>When we reflect on the "challenges and opportunities" associated with climate change, it is important that we continue to address the predicted impacts in a progressive and responsive way that encourages the involvement of the whole community, at the same time balancing the needs of a growing economy and emerging industry and business sector.</p> <p>Council recognises climate change as a global issue and since the adoption of the ELS in 2017 has recognised that we are in a state of climate</p>

	<p>emergency that requires urgent and sustained effort to achieve net zero emissions by 2041.</p> <p>Proposed Change</p> <p><i>A refreshed strategy will incorporate wording to recognise the state of climate emergency and the increased urgency and sustained effort required across the next 10 years to reduce emissions, build organisational and community adaptive capacity and resilience into our environment, community and economy. Existing policy positions which reference climate change will be reviewed and strengthened as required.</i></p>
Recognise biodiversity loss	<p>Scientists and most governments agree that the world is facing an unprecedented environmental crisis with huge numbers of species on the brink of extinction and global temperatures continuing to rise.</p> <p>The community has continued to share the importance of protecting and enhancing our natural assets, including our biodiversity not only for their intrinsic values but also the wide range of ecosystem services they provide.</p> <p>The wellbeing of all Sunshine Coast residents is intimately linked to and dependent upon the region's biodiversity and its conservation.</p> <p>Our ELS recognises the importance of protecting our biodiversity through implementation of the "biodiversity" theme.</p> <p>Proposed Change</p> <p><i>It is proposed a refreshed strategy will incorporate wording to recognise the global biodiversity loss and council and the communities ongoing efforts to deliver on the protection and enhancement of our natural environment.</i></p>
Recognise dark skies	<p>Since the adoption of the ELS, Council has sought to investigate and implement mechanisms that enhance liveability across the region and attain national and international recognition of our natural assets and environmental initiatives.</p> <p>Consideration of a Dark Sky Place on the Sunshine Coast has been discussed by Council as another potential mechanism to further provide for the long-term protection and management of the region's natural assets and transition the Sunshine Coast to a more sustainable, resilient and low carbon way of living.</p> <p>Dark skies can provide many benefits to the community and our natural environment including health and wellbeing, emissions reduction and wildlife friendly habitat outcomes.</p> <p>Proposed Change</p> <p><i>It is proposed a refreshed strategy will incorporate a new policy position in the "Landscape and Character" theme under Policy position 1.1 that:</i></p> <p><i>1.1 The distinctive and diverse landscape is preserved to maintain the beauty of the area:</i></p> <ul style="list-style-type: none"> <i>a. The landscape is retained and continues to underpin the character of the Sunshine Coast</i> <i>b. The urban form is contained within the defined urban footprint</i> <i>c. The natural landscape remains intact, undiminished and protected from development that is incompatible with its values</i> <i>d. Prominent natural landscape features are protected and celebrated</i> <i>e. Dark skies are recognised, protected and celebrated.</i>

<p>Strengthen waste strategic directions</p>	<p>The Environment and Liveability Strategy 2017 sets a target for council to be a zero-net emissions (ZNE) organisation and for the community to be low carbon by 2041.</p> <p>Council's landfill sites contribute significantly to our tier 1 emissions and based on feedback, it is evident that we need to adopt sustainable waste management practices.</p> <p>Proposed Change</p> <p><i>To strengthen our strategic approach to waste management, the refreshed strategy proposes to incorporate new "waste management" policy positions under the "Energy and Resources" theme:</i></p> <p><i>10.2 Waste Management adopts leading global best practices to maximise resource recovery, reduce waste and deliver low emission and circular economy outcomes:</i></p> <ul style="list-style-type: none"> <i>a) New models, infrastructure and partnerships maximise resource recovery to support and grow a circular economy and emerging and complementary industries.</i> <i>b) Innovative waste management solutions, processes and technologies are investigated, and adopted where feasible to support waste and emissions reduction and energy generation optimisation.</i> <i>c) Regional waste management solutions are identified and delivered through government and industry partnerships and collaboration.</i> <i>d) Waste management assets, operational and procurement activities are designed, managed and delivered to minimise climate risks and avoid service disruptions.</i> <i>e) Community and business collaboration through waste education, behaviour change and action support waste reduction.</i> <p><i>Incorporating these new policy positions into this theme will also require some adjustment to the existing policy positions of the "Energy and Resources" theme to better integrate to these strategic directions and remove any duplication.</i></p> <p><i>It is also proposed to incorporate a new Transformational Action "Lets get Waste sorted" with associated tasks to support implementation.</i></p>
<p>The Environment we create</p>	<p>The ELS's "Environment we Create" section remains critical as we respond to affordable housing, cost of living pressures, the health and wellbeing of our community, and accessibility for all as we deliver a liveable Sunshine Coast.</p> <p>Currently 70% of our residents live along the coastline putting significant pressure on the built and natural environment in this location, however, it also presents both challenges and opportunities as we seek to maintain the relaxed lifestyle, protect assets from coastal hazards and retain the connection with the natural environment that is so highly valued.</p> <p>It is anticipated that the future growth will predominately be located in the coastal area with an emphasis on transitioning to a more consolidated urban form supported by appropriate infrastructure, such as a mass transit system, facilities and services - whereby creating a new way of living and minimising impacts on our natural environment.</p>

	<p>Future development will be modelled on the principles of self-containment and sustainability encouraging walking, cycling and access to employment, transport, open space and services.</p> <p>Proposed Change</p> <p><i>It is proposed that a refreshed strategy will strengthen language where relevant to continue to recognise the important role our built form plays in a sustainable Sunshine Coast and in particular as it relates to greening of our neighbourhoods, community connectedness, affordable housing and liveability, active transport and mobility, accessibility for all and community health and wellbeing.</i></p> <p><i>Specifically the Implementation Plan proposes some reworked Transformational Actions and tasks to support the delivery of this outcome – see Transformational Actions 2: A better built environment through sustainable design, 3: Sustainable and affordable living through urban transformation and 5: Greening our neighbourhoods.</i></p>
Community role and partnerships	<p>While the ELS is a regional Council strategy, the delivery of the strategic directions are intended for the benefit and enjoyment of both current and future residents and visitors of the Sunshine Coast. Over time we hope to see more engaged and active community members and visitors contributing to a sustainable Sunshine Coast.</p> <p>Proposed Change</p> <p><i>Where relevant, the refreshed strategy will look to strengthen the recognition of the community's role in implementation of the strategy. The Transformational Action "Celebrating People and Nature" is focussed around the implementation of our Sunshine Coast Biosphere and aims to Inspire and empower the community to value the environment and play their part as we live, learn, work and play sustainably.</i></p>
Strengthen the recognition of First Nations	<p>The Sunshine Coast Council Local Government Area is located on the traditional lands of the Kabi Kabi First Nation peoples and the Jinibara First Nation peoples. We recognise and pay respect to their Elders, past, present and emerging, for their cultural beliefs and ongoing relationship with the land.</p> <p>Proposed Change</p> <p><i>A refreshed strategy proposes to incorporate a new guiding principle "Respect" with supporting considerations in Part B.</i></p> <p><i>Respect - Respecting and embracing our diverse community, we acknowledge our yesterday, celebrate our today and collectively build towards our tomorrow.</i></p> <p><i>Furthermore, ongoing action is required to build stronger partnerships with our First Nations Peoples which is recognised as an updated task:</i></p> <p><i>8.2 Work collaboratively with our traditional owners to recognise connection to country, protect values and knowledge, build stronger relationships and enrich our collective response for a sustainable future</i></p>

Update statistics and facts

The Strategy contains a number of statistics and facts throughout the document to provide a snapshot of environment and liveability on the Sunshine Coast.

For example:

- Number of residents
- Native vegetation percentages and iconic species
- Number of boat ramps, jetties and playgrounds
- Area of open space and number of community venues
- Number of households which have solar power.

Proposed Change

A refreshed strategy proposes to review and update these statistics and facts with the latest information available.

Part B: Implementation Plan

Part B is the implementation plan that outlines how the strategy will be progressed and a focus on important contributions to the strategic directions over next five years.

Part B identifies a governance framework for delivery, a range of key council services central to the delivery of the strategy, and Transformational Actions delivered through five strategic pathways to actively respond to the drivers of change.

The proposed updates for Part B are:

1. Alignment of [Council's services](#) (also known as service outputs) to the relevant theme/s within the Strategy:
 - Delivery of a healthy environment and liveable Sunshine Coast will not be achieved through just the implementation of the Strategy's Transformational Actions and associated tasks.
 - Alignment of Council's services to the strategy's themes seeks to recognise the significant investment and contributions made each year through these activities.
2. Refinement of 26 Transformational Actions to 18 Transformational Actions:
 - Based on feedback received it is acknowledged that there is significant work required to respond to both the challenges and opportunities associated with the drivers of change as we work together to deliver a healthy environment and liveable Sunshine Coast.
 - The proposed reduction in Transformational Action seeks to maintain a focus on the important areas for action but also assist with prioritisation in annual delivery programs.
3. The updated task list reflects the priority tasks considered necessary to deliver on each Transformation Action across the next five years.
 - The development of the draft task list considered each existing task within the current version of the Strategy as well as new tasks required based on phase one outcomes and feedback. The tasks are an amalgamation of existing and new tasks providing a clear and concise implementation reflect current and emerging priorities.

The proposed Transformational Actions and Tasks are outlined below in the Table.

Strategic Pathway 1. A resilient region shaped by clever planning and good design	
1. Protecting the Regional Inter-urban Break and Sub-regional Inter-urban Breaks <i>Securing and protecting the Regional Inter-urban Break and Sub-regional Inter-urban Breaks in perpetuity to frame our neighbourhoods, secure the environmental, production and recreation values and strengthen the identity of our community of communities.</i>	1.1 Continue to promote the values of the Regional Inter-urban Break and advocate for its retention at the current extent and boundaries
	1.2 Advocate for the containment of urban development to the defined urban footprint.
	1.3 Continue to advocate and plan for the protection of the green frame provided by the Sub-Regional Inter-urban Breaks
	1.4 Implement the Inter-urban Break Outdoor Recreation Plan in partnership with stakeholders
2. A better built environment through sustainable design <i>Embedding sustainable, liveable and affordable design into our built environment that celebrates the subtropical lifestyle of the Sunshine Coast and supports our growing community.</i>	2.1 Implement the Sunshine Coast Design Strategy that celebrates our unique identity (inclusive of public realm, landscape corridors and streetscapes in compact and self-contained neighbourhoods)
	2.2 Develop and implement relevant guidelines including climate resilient and subtropical sustainable

	design, tools and standards to complement the Sunshine Coast Design Strategy
	2.3 Plan and deliver excellence in sustainable design outcomes for council owned and managed assets
	2.4 Develop metrics to support building assessments at the design stage and identify the reuse potential of materials to reduce carbon emissions and environmental impact
	2.5 Continue to investigate and plan for the infrastructure requirements (active/public transport, stormwater, open space, social infrastructure and conservation)
	2.6 Facilitate the accelerated uptake of renewable energy assets to reduce emissions, support affordability and community resilience
	2.7 Investigate the establishment of a pilot eco-neighbourhood that incorporates sustainable design that advances liveability, neighbourhood sustainability and affordable living options
	2.8 Explore potential partnerships and work with industry, community and research institutions to recognise and promote excellence in sustainable urban and building design
3. Sustainable and affordable living through urban transformation <i>Facilitating sustainable and affordable living options through urban transformation and self-contained communities supported by essential infrastructure.</i>	3.1 Continue to refine council's 2041 growth management strategy with an emphasis on integrating land use and active/public transport outcomes
	3.2 In consultation with the community, develop and implement an urban transformation strategy to support higher density living for the coastal corridor from Maroochydore to Caloundra
	3.3 Create a street-scale demonstration project to showcase sustainability, good urban design and the benefits of medium density living in partnership with government and industry
	3.4 Progress discussions with industry, government and community on housing diversity, design, barriers, innovation and affordable living options
4. Creating our climate ready region <i>Proactively responding to reduce our climate risk to increase the adaptive capacity and build the resilience of the region.</i>	4.1 Develop an organisational climate risk mitigation framework and embed into our systems and processes to support an integrated response to localised climate hazards and associated risks
	4.2 Investigate and plan for the impacts of cascading climate risks on our critical public infrastructure and service delivery
	4.3 Implement the Coastal Hazard Adaptation Strategy in partnership with the community
	4.4 Develop and implement an integrated coastal hazard adaptation infrastructure planning program, including a Blue Heart transition plan

	4.5 Develop an urban cooling strategy that incorporates urban greening initiatives to respond to risks associated with increased heat
	4.6 Implement the Disaster Resilience Plan
	4.7 Implement the Stormwater Management Strategy
	4.8 Increase community access to information on risks, resilience and priorities for adaptation investment
	4.9 Build capacity to plan and respond to the impacts of climate hazard events and minimise the associated risks
5. Greening our neighbourhoods <i>Delivering cool and shady streets and places to connect and enhance our neighbourhoods and promote biodiversity, resilience and community wellbeing.</i>	5.1 Implement the Street Tree Master Plan
	5.2 Implement the Recreation Parks Plan
	5.3 Investigate the role and function of urban greening and incorporate into planning and decision making
	5.4 Investigate feasibility of identifying 'green infrastructure' as a new appreciating asset class derived from the multiple benefits it provides to our community
	5.5 Develop canopy cover targets and increase urban greening to support community health and wellbeing
Strategic Pathway 2. Protection and enhancement of our natural assets and distinctive landscapes	
6. Conserving our biodiversity <i>Connecting and protecting our valued habitat areas to support our native flora and fauna and providing the community with opportunities to participate in conservation and to experience the natural environment.</i>	6.1 Strategically acquire environmental land to protect and enhance biodiversity values and ecological processes
	6.2 Develop and implement conservation/management plans for key threatened and iconic species
	6.3 Plan and deliver priority projects that support improved fauna movement
	6.4 Continue to plan and deliver opportunities to connect with nature through the council managed environment reserve network
	6.5 Deliver community conservation partnerships, education and stewardship programs
	6.6 Develop and implement a vegetation offsets management and delivery program
7. Keeping our waterways healthy <i>Delivering healthy catchments that continue to support our lifestyle and livelihoods through integrated management, including reducing the impacts of sediment, nutrients and pollutants.</i>	7.1 Deliver catchment management planning for the five major Sunshine Coast catchments
	7.2 Develop and implement a comprehensive urban and rural erosion and sediment control program
	7.3 Develop and implement collaborative water quality improvement and pollution reduction projects

	7.4 Plan and implement riparian, in-stream and wetland rehabilitation activities
	7.5 Design and implement a waterway health monitoring program for the Mary River
8. Celebrating our landscape and character <i>Identifying, understanding and planning for the defining landscapes, character and history of the Sunshine Coast to enable growth and development to be respectful and complementary for the future.</i>	8.1 Document our Sunshine Coast landscape and character to inform planning
	8.2 Work collaboratively with our traditional owners to recognise connection to country, protect values and knowledge, build stronger relationships and enrich our collective response for a sustainable future
	8.3 Investigate opportunities to recognise, protect and celebrate the Sunshine Coast dark sky
Strategic Pathway 3. Responsive, accessible and well managed assets and infrastructure	
9. Growing the natural economy <i>Strengthen the economic base around our natural assets and distinctive landscape features by enhancing a network of nature-based and cultural experiences supported by overnight accommodation and day visitor options.</i>	9.1 Continue to build our understanding of our natural assets and the services they provide as we advocate for and grow the natural economy
	9.2 Undertake eco-tourism planning, investigate cultural tourism opportunities and promote in partnership with community, industry and government
10. Healthy coast <i>Providing a strategic and coordinated approach to the protection, sustainable use and enjoyment of our dunes, beaches, rocky shores and near-shore marine waters.</i>	10.1 Develop and implement a healthy coast management plan
	10.2 Implement the Shoreline Erosion Management Plan
	10.3 Undertake coastal rehabilitation activities in partnership with the community
	10.4 Promote and celebrate beach culture and coastal values through community engagement and education
	10.5 Implement a Healthy Coast Monitoring and Reporting Framework
11. Expanding the green space <i>Securing and activating space for future generations to improve conservation, flood mitigation and sport and recreation opportunities.</i>	11.1 Plan, protect and manage our five major green spaces: <ul style="list-style-type: none"> • Blue Heart • Coast • Mountain View • Lower Mooloolah River • Regional Inter-urban Break
	11.2 Progress planning and delivery of major sport and recreation precincts within identified green spaces
	11.3 Implement the Network Blueprints and Desired Standards of Service to secure and embellish additional environmental, recreation and sporting land
	11.4 Progress planning and delivery of the Sunshine Coast Ecological Park
	11.5 Plan for and expand the recreation trails network

12. Great places and spaces <i>In partnership with industry and community develop a network of contemporary and accessible places and spaces that provide and support opportunities for creative, community and active/passive experiences.</i>	12.1 Plan and deliver priority social infrastructure
	12.2 Implement Network Blueprints and Desired Standards of Service in partnership to enhance public access spaces and services to meet demonstrated community need
	12.3 Facilitate delivery of infrastructure for the 2032 Olympic and Paralympic Games to ensure a strong legacy for the Sunshine Coast community
13. Managing our invasive plants and animals <i>Providing a collaborative, effective and efficient response to the management of invasive plants and animals to reduce their social, economic and environmental impacts.</i>	13.1 Implement the Sunshine Coast Local Government Area Biosecurity Plan
Strategic Pathway 4. Transitioning to a sustainable and affordable way of living	
14. Celebrating people and nature <i>Supporting, enabling and inspiring the community to value the environment and play their part as we live, learn, work and play sustainably in our Sunshine Coast Biosphere.</i> Note: This incorporates key actions and tasks from the 2020 edition: - 18 An involved community - 19 Changing our ways - 21 How we live in the environment.	14.1 Implement the Sunshine Coast Biosphere in partnership with the community including sustainability performance reporting
	14.2 Promote a healthy environment and liveable Sunshine Coast throughout our community
	14.3 Develop an effective model to deliver a coordinated behaviour change program to enhance community understanding and uptake of sustainable living practices
	14.4 Develop a low carbon community plan in consultation with community, government, industry and research bodies
	14.5 Investigate options to increase community investment in renewable energy transition projects
	14.6 Promote and support urban backyard and balcony biodiversity and local food production programs, systems and initiatives
	14.7 Investigate and develop engagement opportunities that support diversity and inclusion
15. Zero emissions organisation <i>Delivering a zero-net emissions organisation and transitioning to a renewable energy future.</i>	15.1 Implement and report on the organisational zero-net emissions plan including progress towards reduction targets
	15.2 Continue to deliver organisational awareness and education programs relating to emissions reductions
	15.3 Pilot and implement feasible emission reduction and renewable energy projects for council operations and infrastructure
	15.4 Expand Councils integrated clean energy program to support emissions reduction, community uptake and increase council's financial sustainability

	15.5 Facilitate and support the roll-out of a strategic electric vehicle charger network
	15.6 Develop an organisational emissions offsetting policy
16. Attracting sustainable industries/businesses <i>Strengthening our region's sustainability vision by attracting and nurturing research and sustainable industries and businesses.</i>	16.1 Leverage partnerships with business and research organisations to develop sustainable business opportunities
17. Getting waste sorted <i>Delivering leading global best practices to maximise resource recovery, reduce waste and deliver low emission and circular economy outcomes.</i>	17.1 Review and implement the Waste Strategy
	17.2 Develop sustainable and feasible waste management projects and initiatives which are aligned with a circular economy and support emerging and complementary industries
	17.3 Plan and deliver Food Organics Garden Organics collection services and investigate treatment and diversion opportunities that reduce waste to landfill and greenhouse gas emissions
	17.4 Explore and implement feasible innovative waste recovery and treatment options, including waste to energy opportunities and partnerships
	17.5 Deliver intuitive and engaging waste education services that will compliment and support sustainable waste management services
18. Building our knowledge <i>Enabling evidence-based decisions for a healthy environment and liveable Sunshine Coast.</i>	18.1 Report annually on organisational environmental sustainability performance to inform business improvement
	18.2 Undertake targeted monitoring, modelling, research and other data collection
	18.3 Develop and maintain a user-friendly interface to enable the provision of accessible, current and accurate data
	18.4 Maintain and enhance partnerships with research institutions, government and non-government organisations to grow our collective knowledge
	18.5 Develop and trial new and emerging tools and technologies to improve knowledge, data capture and business integration

How can I get involved?

Council is seeking your feedback on the proposed changes to the Strategy from 21 July to 13 August 2023 to ensure it continues to provide the long-term strategic direction and transformational change required to maintain a healthy environment and liveable Sunshine Coast.

Your feedback can be provided via Council's [have your say page](#).

Get involved via:

- The [online survey](#)
- Email your thoughts to the project team: els@sunshinecoast.qld.gov.au
- Phone the team and share your thoughts - (07) 5475 7272.

Next steps

Following phase 2 engagement and consideration of feedback received, the Refreshed Strategy will be updated (Part A and B) and presented to Council in late 2023 for consideration.