

Nambour (Namba) Place Plan
Community Engagement Report
2023

Edition December 2023

sunshinecoast.qld.gov.au

07 5475 7272

Locked Bag 72 Sunshine Coast
Mail Centre Qld 4560

© Sunshine Coast Regional
Council 2008 — current.

Reproduction without
permission is prohibited.
Sunshine Coast Council™
is a trademark of Sunshine
Coast Regional Council.

Acknowledgements

Council wishes to thank all
contributors and stakeholders
involved in the development
of this document.

Reference document

This document should
be cited as follows:

Sunshine Coast Council.

**Sunshine Coast <strategy/
plan name> 2018-2028.**

Disclaimer

To the extent this document
contains future plans, activities,
policies and strategies, these
matters are aspirational and
subject to change at any time
without notice.

While the Sunshine Coast
Council has exercised
reasonable care in preparing
this document, no warranty
or representation is given by
Council or its officers in relation
to any of the information or data
contained within this document
(including as to its accuracy,
reliability, completeness or
suitability for any purpose).

Council and its officers are
not liable (including without
limitation, liability in negligence)
for any loss, damage, expenses
or costs (including any
consequential loss or damage)
incurred by you relating to any
use of, or reliance upon, the
information and data contained
within this document.

Traditional Acknowledgement

Sunshine Coast Council acknowledges the Sunshine Coast
Country, home of the Kabi Kabi peoples and the Jinibara
peoples, the Traditional Custodians, whose lands and waters
we all now share.

We recognise that these have always been places of cultural,
spiritual, social and economic significance. The Traditional
Custodians' unique values, and ancient and enduring cultures,
deepen and enrich the life of our community.

We commit to working in partnership with the Traditional
Custodians and the broader First Nations (Aboriginal and
Torres Strait Islander) communities to support self-determination
through economic and community development.

Truth telling is a significant part of our journey. We are
committed to better understanding the collective histories of the
Sunshine Coast and the experiences of First Nations peoples.
Legacy issues resulting from colonisation are still experienced
by Traditional Custodians and First Nations peoples.

We recognise our shared history and will continue to work
in partnership to provide a foundation for building a shared
future with the Kabi Kabi peoples and the Jinibara peoples.

We wish to pay respect to their Elders — past, present and
emerging, and acknowledge the important role First Nations
peoples continue to play within the Sunshine Coast community.

Together, we are all stronger.







Table of contents

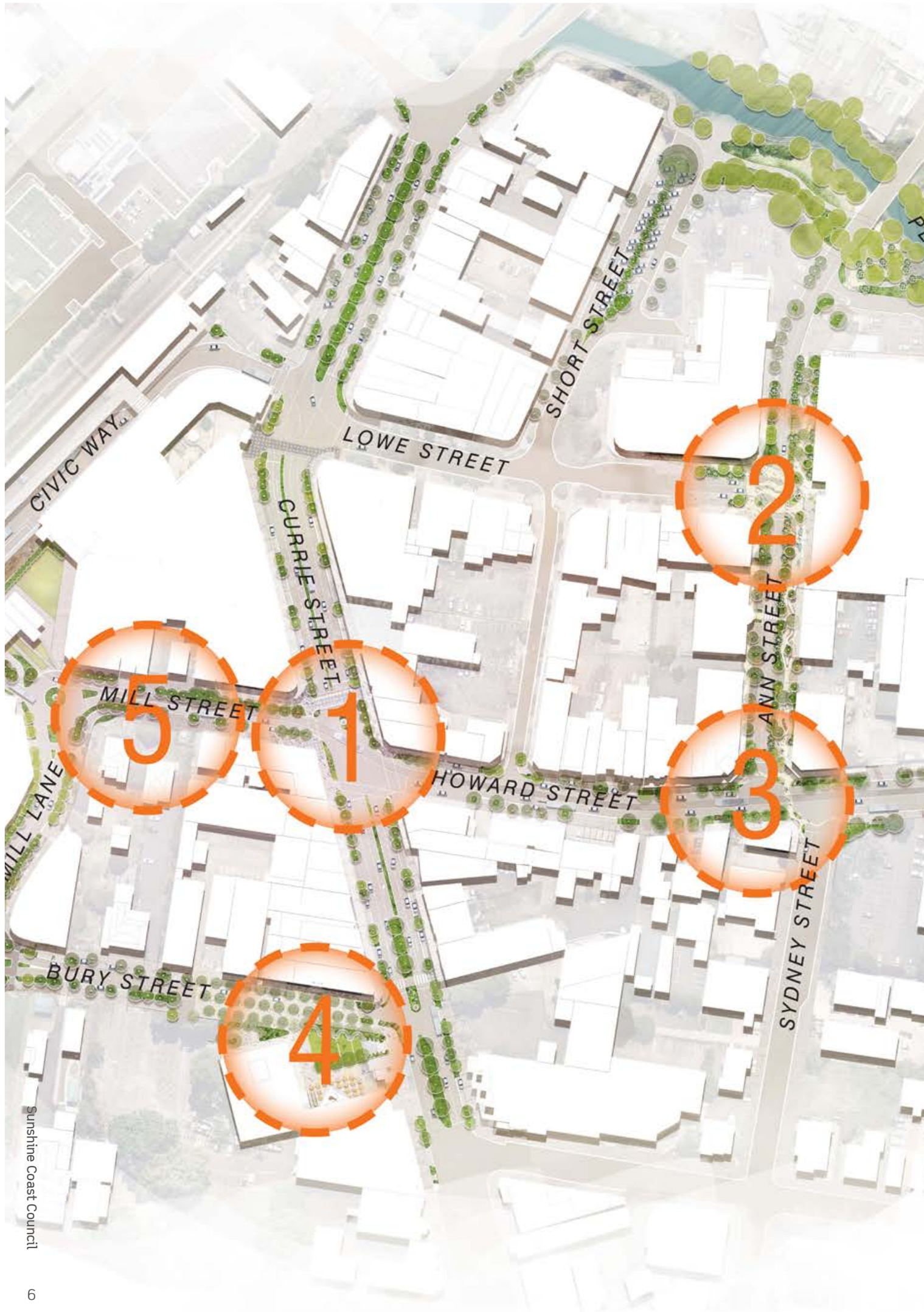
About The Project 5

Community Involvement 6

Survey Results 10

Thank you to everyone who had their say on the Nambour (Namba) Place Plan engagement which closed on 22 September 2023. Council received 446 survey responses resulting in 94 per cent support of the plan.

This report is intended as a summary of the feedback received from the community through the recent Have Your Say survey.



About The Project

The Draft Nambour (Namba) Place Plan aims to improve the centre's streetscapes, facilitate a diverse range and scale of events, and bring new playful experiences, journeys and cultural connections to the community. The plan is informed by patterns of its history, stories of its people and contemporary aspirations.

The plan is a response to private development momentum within the town centre, the emerging Special Entertainment Precinct, and the need to lift and renew the streetscape to increase economic and community activation.

It has been informed by community representative input, which has guided the collective vision, concept design and long-term strategy for future streetscape development of the precinct.

Ultimately the aim is to provide a clear and detailed understanding of how the streetscape can look and function, how much it will cost, and provide a roadmap for when each stage of construction can occur.



Project timeline

Stage 1: Confirming the vision and setting priorities (Complete August 2023)

Invitational stakeholder and key community group meetings, including workshops to form project principles and vision, to acknowledge previous consultation, reports and plans

Stage 2: Introducing the draft Place Plan (Complete September 2023)

The second stage of engagement took place over a four-week period in September 2023 and involved several pop-up information and feedback sessions as well as a media release. This stage involved introducing the draft Place Plan, including streetscape concept designs for five locations within the town centre. The engagement also established the community's priorities for what is most important to deliver within the available budget.

Stage 3: Presenting the final Place Plan (Mid 2024)

The third and final stage of engagement will present the final Place Plan for the community's information.





Community Involvement

Community Representatives Engagement

The Place Plan builds upon the various planning documents that have been developed over the past 10 years. This includes the Nambour Activation Plan and the Nambour Economic Transition Strategy produced by Reimagine Nambour.

During the early planning phase, Council has invited feedback from representative residents, community groups, businesses, the local First Nations community and key stakeholders to inform the development of the Draft Nambour (Namba) Place Plan.

Council ensured all previous engagement and work achieved was acknowledged and honored in the September 'Introducing the plan' engagement phase. Previous feedback built upon with the broader community's feedback, expectations and values.

From March 2022, invited community representatives shared their values and future vision for Nambour's town centre, including identifying key areas and precincts.



Cultural Engagement

We commit to working in partnership with the Traditional Custodians and the broader First Nations (Aboriginal and Torres Strait Islander) community to support self-determination through economic and community development. Conversations regarding Nambour's place name are ongoing.

Working alongside the local First Nations community, the Draft Place Plan has journeyed through experiences and consultation to understand the stories of this place. Led by Aunty Bridgette Chilli Davis, we continue to work collaboratively to ensure the cultural history of Nambour is carried throughout the design of the Draft Place Plan.



Cultural engagement snapshot



4

weeks of
engagement

(28th August —
24th September, 2023)



446

'Have your Say'
surveys completed



5

community
drop-in sessions



5,747

current views on
Nambour Place
Plan website



441

reactions made
on Council's social
media posts



6,523

project emails sent



30+

key stakeholder
meetings



263

subscribers to
the project email
for updates



43,05K

impressions on
Council's social
media posts
(Facebook,
Instagram
and LinkedIn)



10

mentions in media



5

social media posts



20

community
activation sessions



Do you agree with the project vision?

'Nambour is a naturally beautiful, creative, culturally active, and sustainable place to live, work, play and visit. Nambour is known as the hub of the hinterland, a town nestled in nature.'

73% Yes

21% Yes, however you should consider...

6% No

Emerging themes



Create a pedestrian friendly street by improving footpaths and increasing pedestrian crossings.



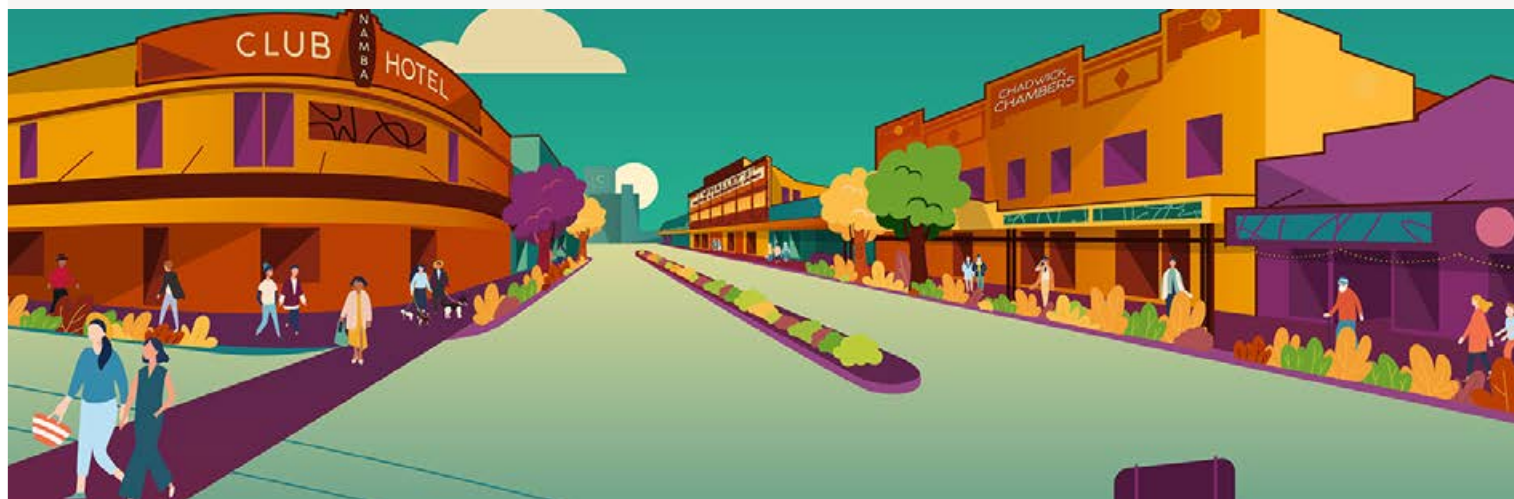
Create easy access to the town by retaining car parking and maintaining traffic flow to the town centre.



Celebrate what is special and loved about Nambour by highlighting the street's heritage, character and village feel.



Enhance the town with improvements that retain and add to the existing character as a heritage town.





Do you support the overall Place Plan for the town centre?



Emerging themes



Create a pedestrian friendly street by improving footpaths, making it safer to cross the street, slowing traffic and improving sight lines.



Make it easier to access by retaining car parking and maintaining traffic flow in the town centre, while inviting more active transport routes.



Create a cool, shady street with more trees and plantings.



Celebrate what is special and loved about Nambour by highlighting the street's heritage, character and village feel.



Support local independent shops and services to add to the town as a convenient local destination, while creating a safe and inviting space for the community.



Focus Area 1: Currie Street

Do you support the plan for
Focus Area 1/Currie Street?

63% Yes

26% Yes, however you
should consider...

11% No

Emerging themes



Create a pedestrian friendly street by improving footpaths, making it safer to cross the street, slowing traffic and improving sight lines.



Create a cool, shady street with more trees and plantings.



Celebrate what is special and loved about Nambour by highlighting the street's heritage, character and village feel.



Make it easier to access by retaining car parking and maintaining traffic flow in the town centre, while inviting more active transport routes.



Support local independent shops and services to add to the town as a convenient local destination, while creating a safe and inviting space for the community.



Focus Area 2: Ann Street

Do you support the overall
Place Plan for the town centre?

67% Yes

21% Yes, however you
should consider...

11% No

Emerging themes



Create a pedestrian friendly street by making it safer to cross, slowing traffic, improving sight lines and linking pedestrian connections.



Create a cool, shady street with more trees and plantings.



Give the street a more inviting feel by increasing lighting and adding creative lighting options.



Create easy access to the town and businesses by retaining car parking, maintaining traffic flow and allowing for taxi and drop-off areas.



Support local independent shops and services to add to the town as a convenient local destination, while creating a safe and inviting space for the community.



Focus Area 3: Howard Street

Do you support the plan for
Focus Area 1/Currie Street?

74% Yes

17% Yes, however you
should consider...

9% No

Emerging themes



Create a pedestrian friendly street by improving footpaths and increasing pedestrian crossings.



Give the street a more inviting feel by increasing lighting and adding creative lighting options.



Create easy access to the town by retaining car parking and maintaining traffic flow to town centre.



Enhance the town with improvements that retain and add to the existing character as a heritage town.



Focus Area 4: Bury Street

Do you support the overall
Place Plan for the town centre?

73% Yes

16% Yes, however you
should consider...

10% No

Emerging themes



Maintain the two way function of Bury Street while allowing for safe pedestrian crossing.



Included a range of family friendly features, while making sure it is a safe environment.



Provide opportunities to sit and enjoy the street, gather or rest by providing more seating and outdoor dining areas.



Utilise the laneways to create areas of interest for the community.



Create easy access to the library by retaining car parking and utilising drop-off areas.



Focus Area 5: Mill Street to roundabout

Do you support the plan for
Focus Area 1/Currie Street?

79% Yes

13% Yes, however you
should consider...

8% No

Emerging themes



Add vibrancy and interest with public artwork and interpretive elements.



Create easy access by retaining and increasing car parking.



Would prefer to maintain the two-way traffic function over the increased amenities.



Create a pedestrian friendly street by making it safer to cross the street, slowing traffic, improving sight lines and linking pedestrian connections.

What place area within the precinct would you like to see built first?



Image: Focus Area 1: Currie Street



Image: Focus Area 2: Ann Street



Image: Focus Area 3: Howard Street



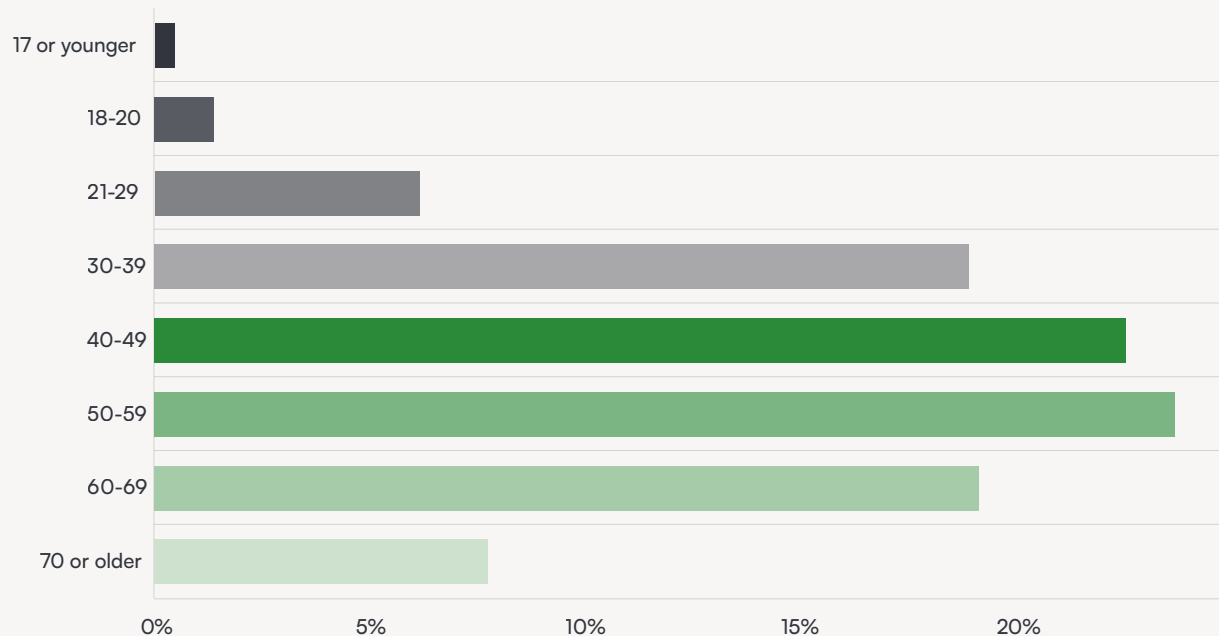
Image: Focus Area 4: Bury Street



Image: Focus Area 5: Mill Street to roundabout

Demographic snapshot

Most participated age groups



Relationship to Nambour

