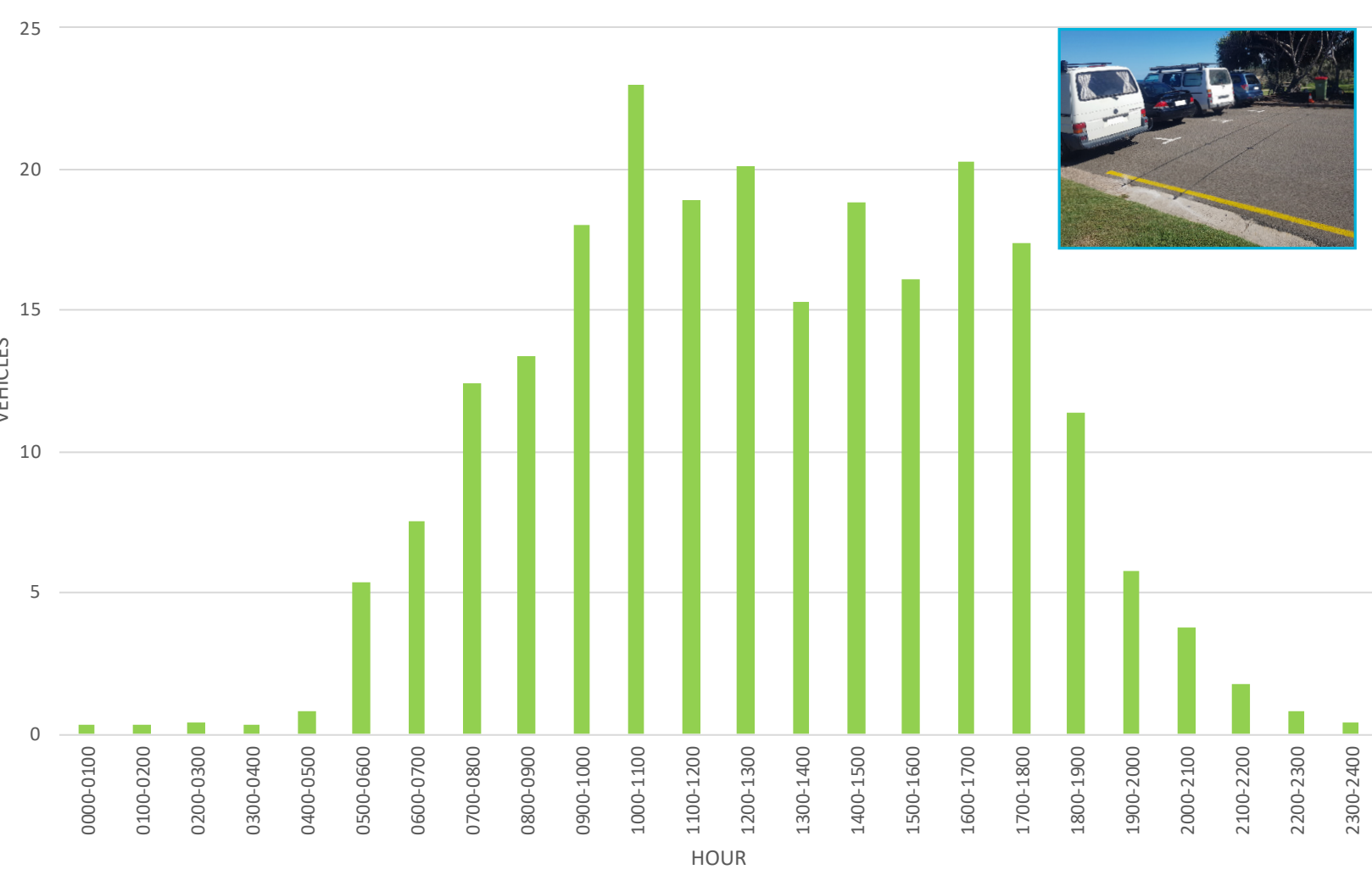


Zone 3A - North Shelly Beach (William Street Car Park)

Current conditions - Issues and Opportunities

- a. The designated parking area on William Street is unnecessarily large for the four car parking spaces it provides.
- b. The location and orientation of the parking spaces contributes to light spill directly onto Shelly Beach, particularly from the headlights of parked cars.
- c. The beach access is wide to accommodate the requirements of beach servicing and emergency vehicles. The width and east/ west alignment of the access contributes to light spill directly onto the beach.
- d. Turtles are vulnerable to disturbance and disorientation from artificial lights.
- e. The parking detracts from the visual and physical amenity of the area.
- f. The sharp bend in the coastal path at this location has created a point of conflict between path users and contributes to nuisance lights associated with night time users of the coastal path.
- g. The William Street car park is likely to experience an increase in informal overnight free camping, consistent with many car parks on the Sunshine Coast.

William Street Vehicle Movements - February 2021



- › The traffic counter detected an average of 87 vehicles/ day eastbound, into the bays.
- › The majority of vehicle movements occurred between 5am and 8pm.
- › From 8pm onwards the counter detected less than 2 vehicle movements per hour.
- › The Department of Environment and Science advice is that the majority of turtle hatchlings emerge from approx. 8pm onwards.



Option 1 - Retain and regulate



Option 1.1 - No change

- › Leave current parking area and management as is.

Option 1.2 - Regulate Parking

- › Regulate William Street car park.
- › Enforce as a no parking zone between the hours of 8pm and 4am during the turtle nesting season.

Option 2 - Move parking 5m west



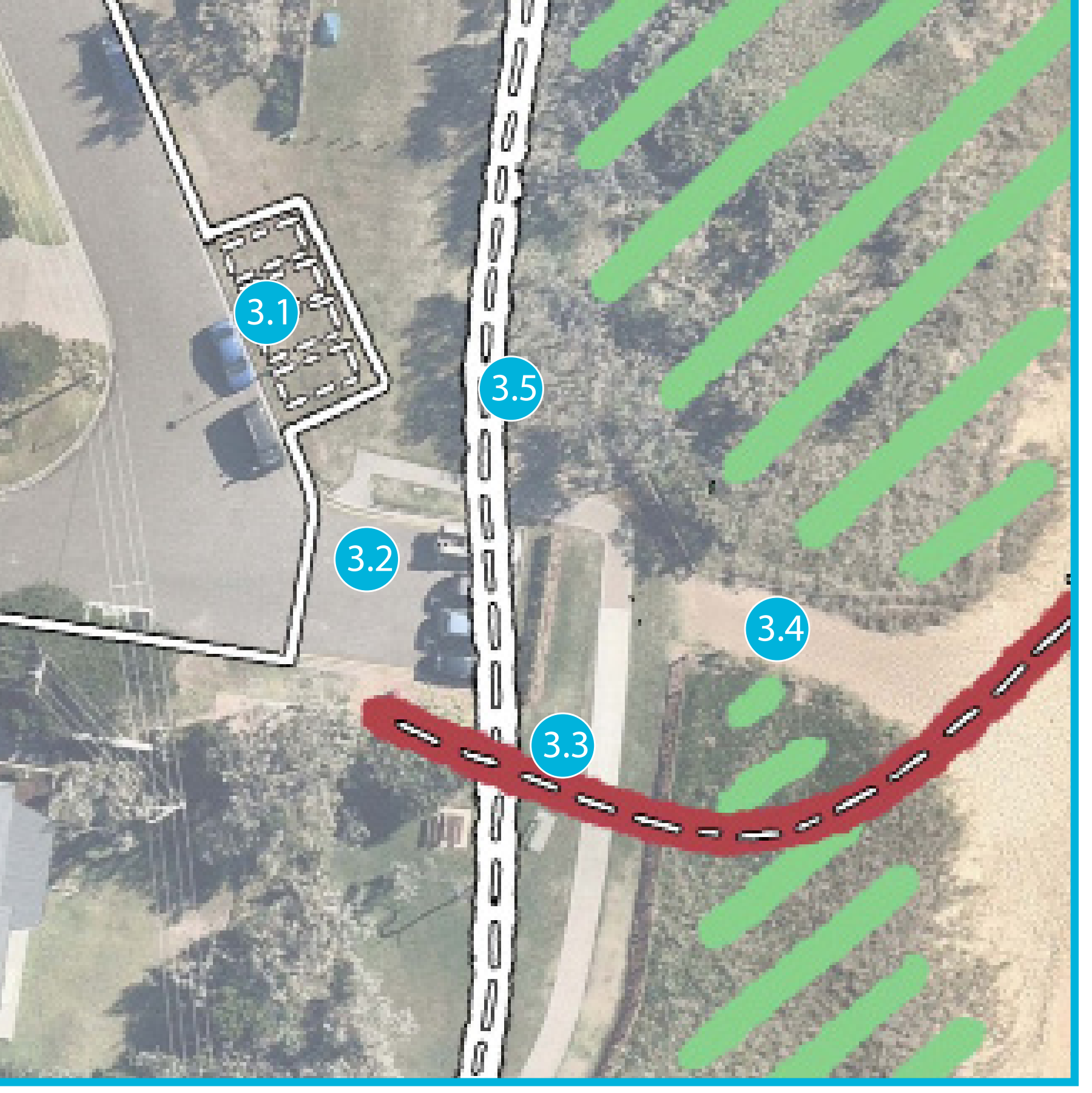
- 2.1 Move existing parking spaces 5m west.
- 2.2 Reclaim balance area of current car park and utilise as enhanced public open space.
- 2.3 Re-align beach access to face east and then north to provide shelter from the south-easterly breezes and contribute to reduction of direct light spill from adjacent road network onto the beach.
- 2.4 Undertake appropriate dune planting to contribute to light spill reduction and dune health.

Option 4 - Remove car park



- 4.1 Remove current parking spaces (4no.) and replace with fewer on-street parking spaces.
- 4.2 Utilise space released from parking as part of the coastal corridor and park area.
- 4.3 Re-align beach access to face east and then north to provide shelter from the south-easterly breezes and contribute to reduction of light.
- 4.4 Introduce sensitively design viewing platform as part of the beach access and relocate memorial seat

Option 3 - Relocate and realign parking



- 3.1 Relocate and realign parking bays away from beach entry to mitigate light spill.
- 3.2 Reclaim balance area of current car park as enhanced public open space.
- 3.3 Re-align beach access to provide shelter from the south-easterly breezes and contribute to reduction of direct light spill from adjacent road network.
- 3.4 Undertake appropriate dune planting to contribute to light spill reduction and dune health.
- 3.5 Straighten the section of coastal path in the vicinity of the William Street car park to eliminate the sharp bend, reduce conflict between users, and address safety and light spill concerns.