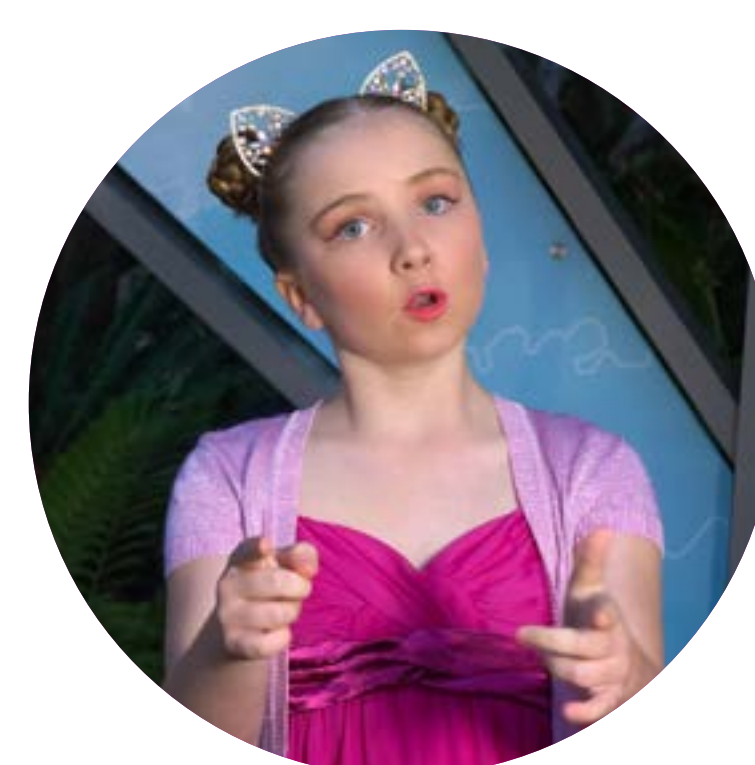




# How will you be a part of 'Create Caloundra'? Your Community + Creative Hub



Your input  
has been very  
valuable



Have we got  
it right?



Thank you  
for sharing  
what's important  
for your future  
Caloundra



## In November and December 2020 we heard that you would:



**Keep it green:** retain and extend the open space, tree canopy, shady garden and park feel to complement and contrast to the beach



**Keep it unique:** tell the stories of Caloundra and keep the distinct low key, friendly and inclusive atmosphere



**Change the way we move:** rethink how we get to and park near this place as it becomes ever more popular



**Improve how to navigate:** make finding spaces, places and what's on in the precinct, and wider Caloundra, much easier



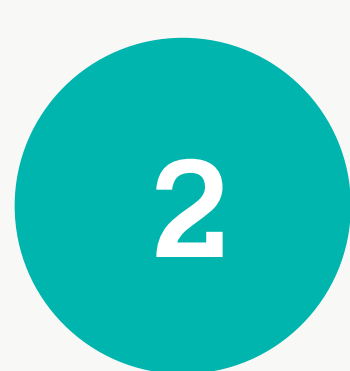
**Love more events and creative interest:** a walkable and accessible precinct showcasing and involving opportunities (day and night) for different arts, events, creative activities, food and fun!



**'Have we got it right?'**  
Tell us in the survey  
on council's website.



2017  
Caloundra  
Centre  
Master Plan



Caloundra  
Community  
+ Creative Hub  
Background research  
and site analysis



Community  
Engagement 1  
Have Your Say -  
'Values and Vision'



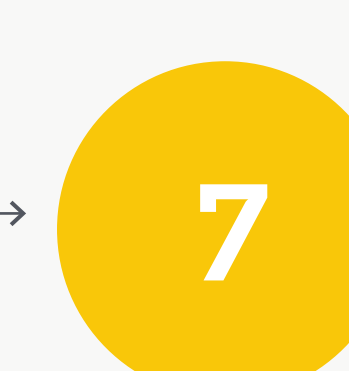
Concept  
Design  
Development



Community  
Engagement 2  
Have we got it right?



Finalise  
concept  
design



Community  
Engagement 3  
Celebrate your  
Caloundra



[www.sunshinecoast.qld.gov.au](http://www.sunshinecoast.qld.gov.au)  
07 5475 7272



Our region.  
**Healthy. Smart. Creative.**



# We heard that you envision...

A place for people to enjoy and discover arts, creativity and community in an extended shady and green public precinct.

A place which connects spaces and civic buildings with accessible events and engaging creativity, social and retail opportunities that tell the stories of Caloundra old and new.

A Community + Creative Hub that captures your spirit of Caloundra.

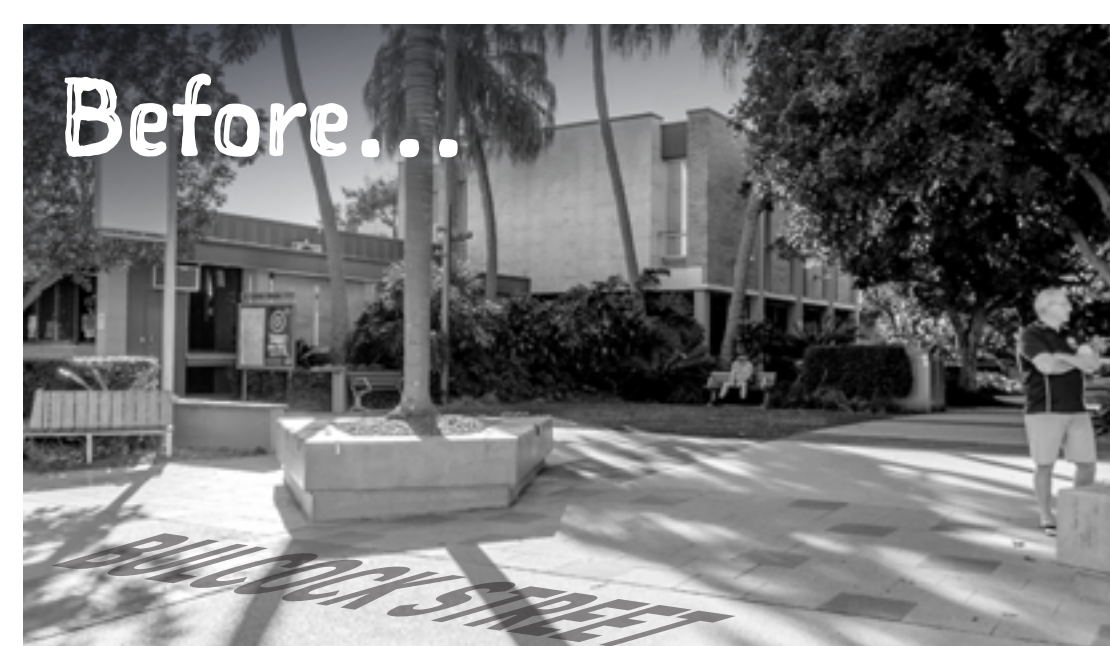
## ...and that you picture



Bird's eye view  
looking east along  
Bulcock Street



View looking north through  
Felicity Park towards the Library



View looking north across  
the new Town Square  
from Bulcock Street



'Have we got it right?'

Tell us in the survey on council's website.



[www.sunshinecoast.qld.gov.au](http://www.sunshinecoast.qld.gov.au)  
07 5475 7272



Our region.  
Healthy. Smart. Creative.





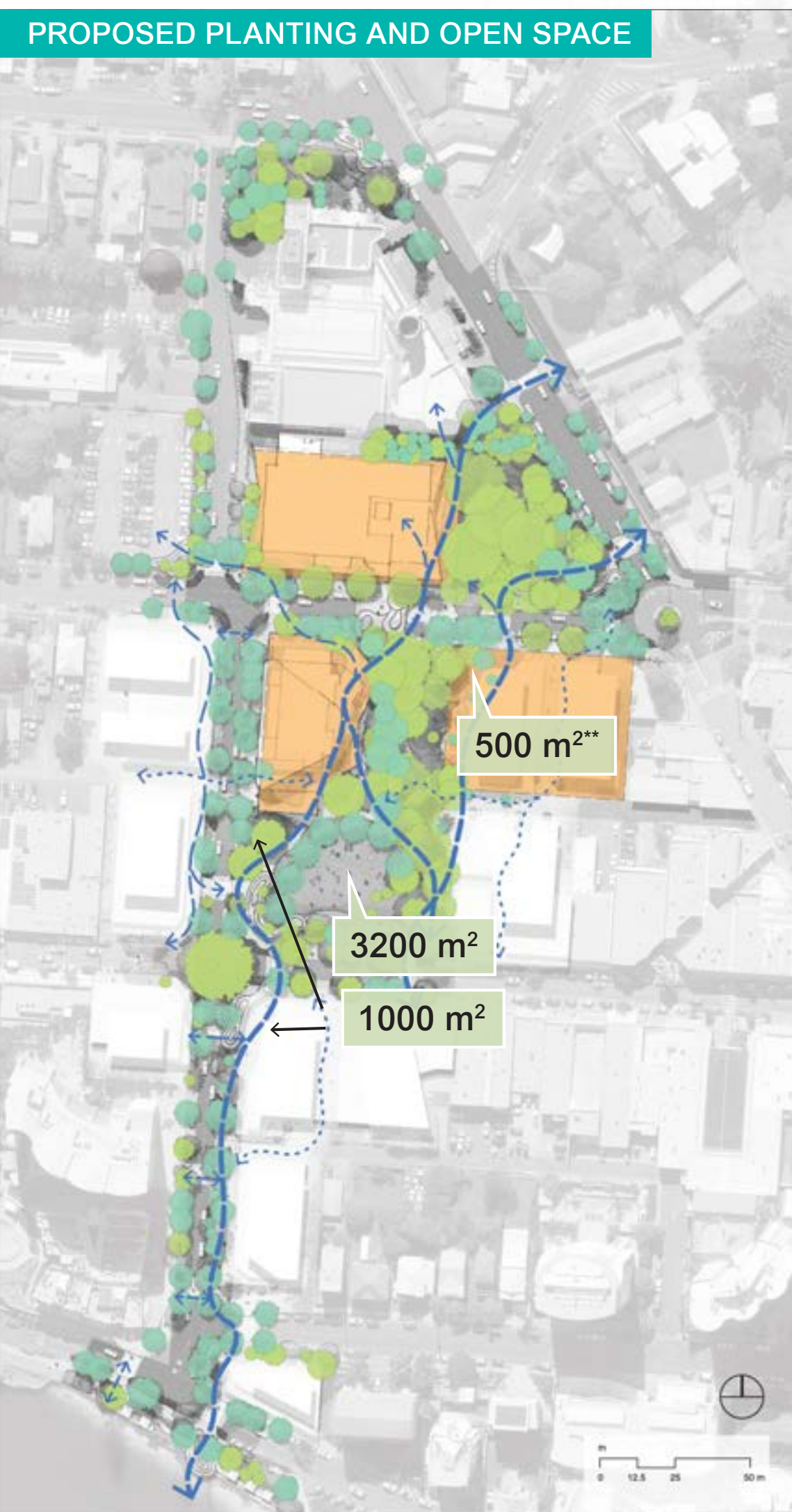
Thank you for  
'Creating  
Caloundra!'



**LEGEND**

- Existing tree – high value
- Existing tree – medium value and cycad / fern trees
- Existing tree – low value
- Existing tree on development site – no value assigned

Note: Existing tree values are as determined by an independent arborist assessment report. With the exception of trees along its western boundary, the remainder of trees on the development were not assessed.



**LEGEND**

- Existing trees
- New trees
- Pedestrian Circulation
- New building footprint
- 3,300 m² Approximate area of new public realm (open space)
- \*\*500 m² Approx. area of publicly accessible space on private site

Final design and project delivery is subject to the endorsement of Council, and funding allocation. Funding constraints may result in reduced scope for this project.  
\*Final building layout is subject to detailed design.



# About the precinct

The vibrant new Caloundra, Community + Creative Hub creates a public spaces precinct connecting The Events Centre, new District Library, Caloundra Regional Gallery, town square, parks and street spaces through to Bulcock Beach.

We want to check **'Have we got it right?'** in hearing your values and vision and asking if the draft concept design is what you picture?

## Questions

- 1 How would you prioritise the values we heard, with 1 being the most important and 5 being the least important?
- 2 Are there any values, themes or priorities missing?
- 3 Do you agree with the vision statement?
- 4 What would you add or change about the vision statement?
- 5 Is there anything you would change about the draft concept design?
- 6 What do you like or love about the draft concept design?
- 7 What event, activity or day to day happening are you most interested in being a part of at the Hub?
  - Arts, culture, knowledge outdoor classes, 1-4hours, maximum 15 participants
  - Single music or artist evening performance, 2 hours, crowd of 50 people
  - Family Fun event with activities, performances and food over a day, 500 people (in place for the day)
  - Themed Arts, First Nations, Authors events / markets, 1000s of people (moving through over day and night)
  - I am interested in running community and creative events myself and have the following idea...

## Take the survey



**'Have we got it right?'**  
Tell us in the survey on council's website.



[www.sunshinecoast.qld.gov.au](http://www.sunshinecoast.qld.gov.au)  
07 5475 7272



Our region.  
**Healthy. Smart. Creative.**

